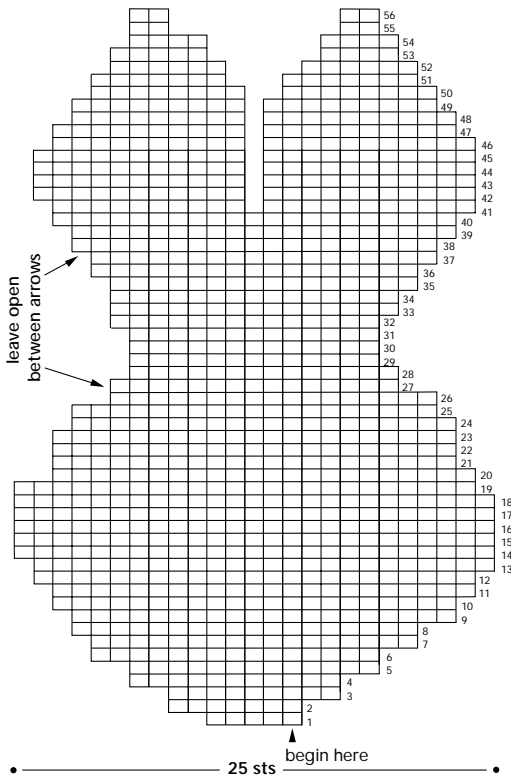


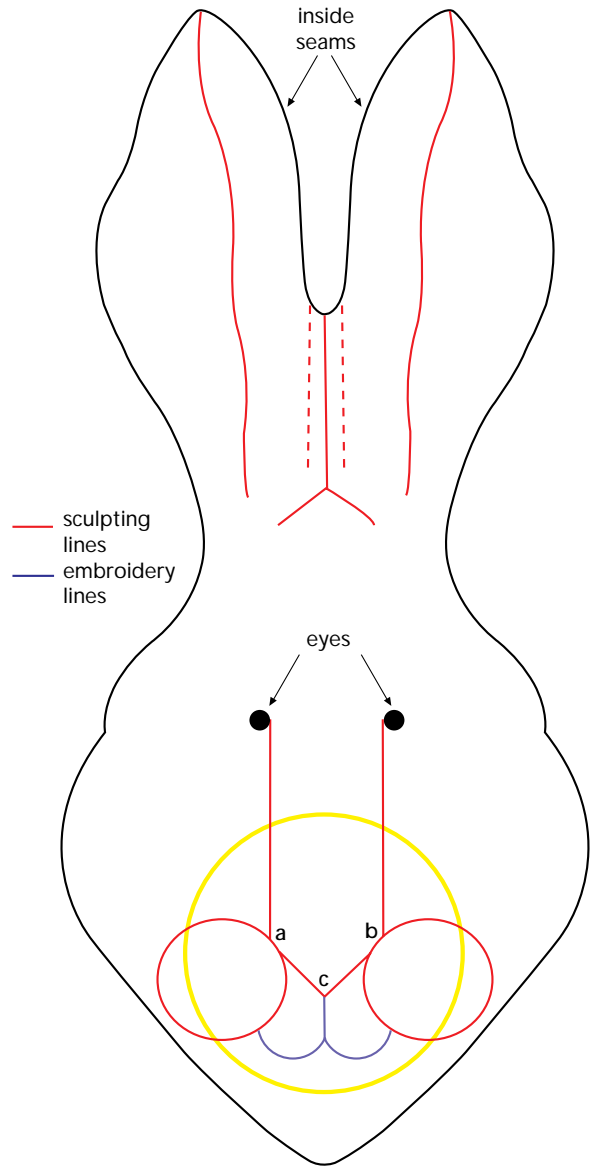


LADDER STITCH

HEAD FRONT/BACK (knit 2)

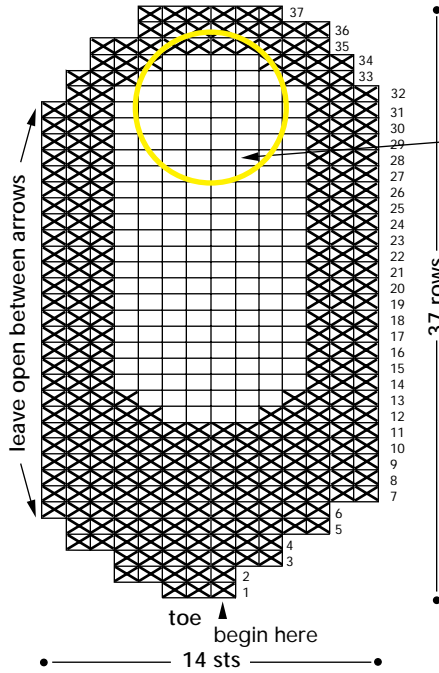


STITCHING DIAGRAM



56 rows

SHOE TOP/SOLE (knit 4)



Use MC for 2 shoe tops only. Make 2 soles in solid CC.

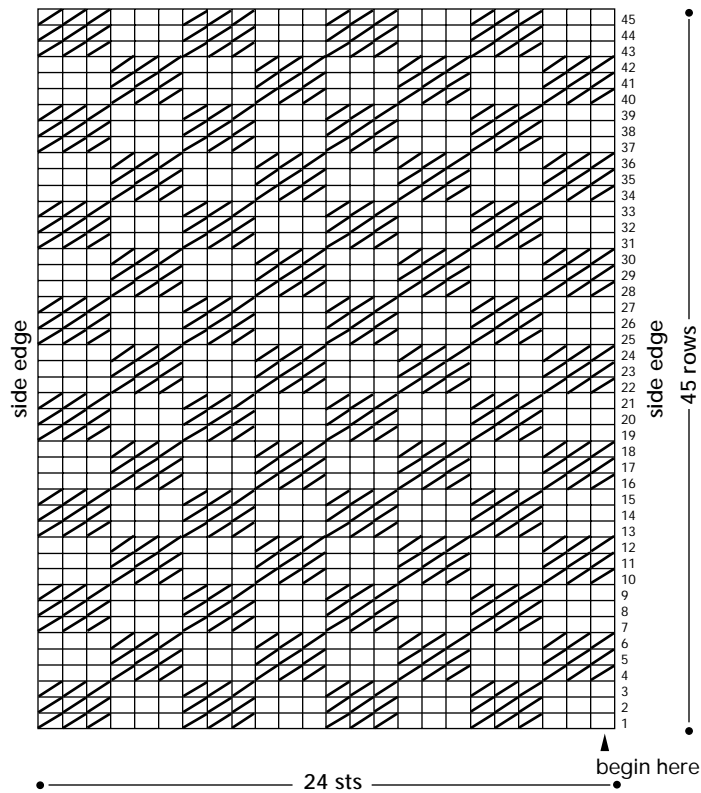
COLOUR KEY



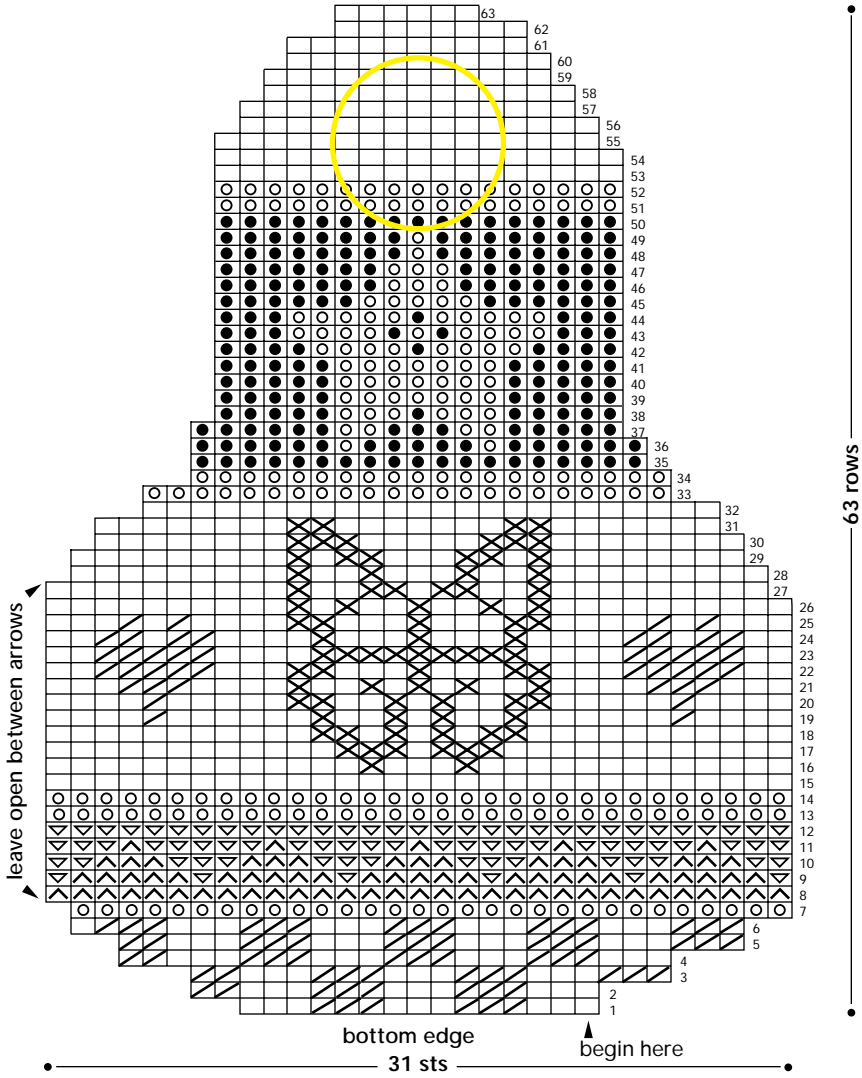
MC= main body colour

CC= contrast colours as desired

FAIR ISLE LEG (knit 2)



FAIR ISLE BODY FRONT/BACK (knit 2)



FAIR ISLE ARM (knit 2)

