

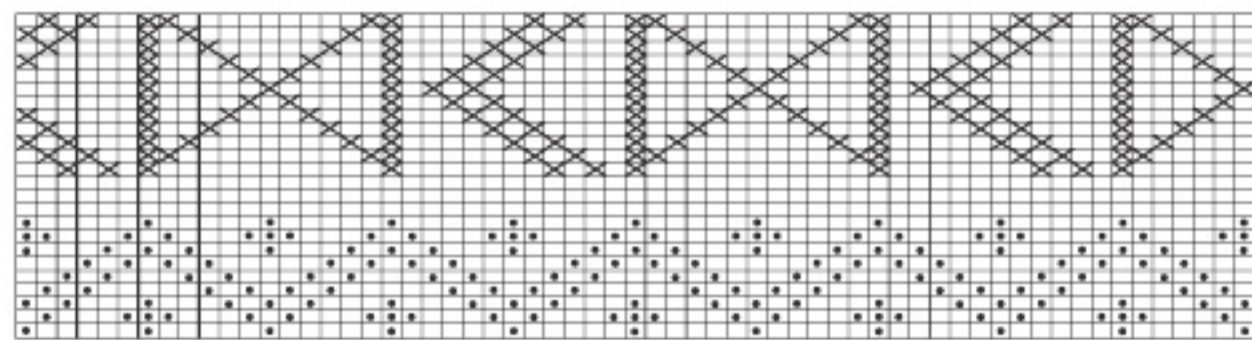
NEWFOUNDLAND PULLOVER: Front/Back

LEGEND

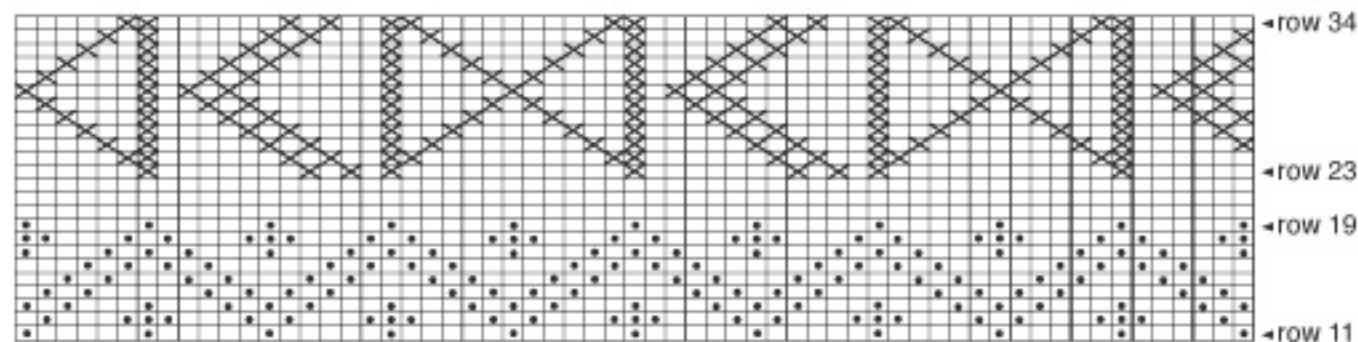
Working knit rows from right to left and purl rows from left to right, work chart in stocking stitch as follows:

- CC
- MC
- ⊗ With MC, purl on *right* side of work, knit on *wrong* side of work to form diamond-and-zig-zag pattern.

NOTE: Cut printout along centre-stitch edge of each chart half; overlapping down vertical centre row, tape charts halves together. To make it easier to read, print out and photostatically enlarge chart by 200 per cent.



end here: XL L M S centre stitch
FRONT/BACK



centre stitch begin here: S M L XL

FRONT/BACK